

## 19 + Acres of Land For Sale



**Municipality:** Town of Cortlandville, Cortland County

**Acreage:** 19.53 Acres

**Tax Map ID:** 96.13-01-02.100

**Utilities at Site:** Municipal sewer and water are available, as well as natural gas provided by NYSEG and electricity provided by National Grid.

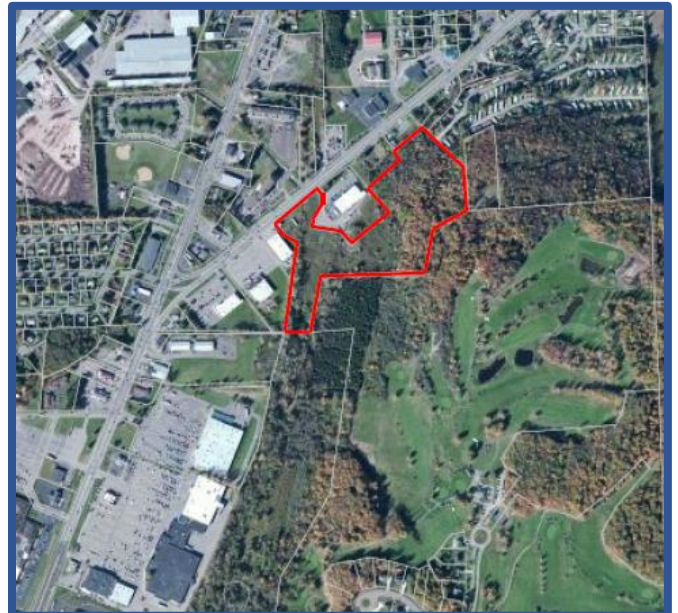
## Employers in Close Proximity to the Site

Industries have strong presence in the South Cortland area. The following manufacturers and major employers are located within a two-mile radius:

|   |                      |
|---|----------------------|
| Pall Trinity Micro Corporation *                  | 650 to 675 employees |
| PASS World Headquarters, A Division of Pall Corp. | 120 employees        |
| Pyrotech  | 35 employees         |
| Gutchess Lumber Company                           | 200 to 399 employees |
| SUNY College at Cortland                          | 900+ employees       |
| J.M. Murray Center                                | 200 to 311 employees |
| Forkey Construction                               | 100 employees        |
| Crown Industrial Corp. *                          | 10 to 24 employees   |
| Cortland Commerce Center                          | 60 to 100 employees  |
| Bryne Dairy                                       | 25+ employees        |
| Empire Tractor                                    | 10 to 15 employees   |

## Retail in the Corridor

|                        |                               |
|------------------------|-------------------------------|
| Wal-Mart Super Center  | Lowes                         |
| Price Chopper          | JC Penny                      |
| Marshalls              | R.H. Homer Carpet             |
| Applebees              | First Niagara Bank            |
| A&W                    | Dunkin' Donuts                |
| Aldi                   | Advanced Auto Parts           |
| Aspen Dental           | Sleep Lab                     |
| Central Tractor Supply | Diamond Wireless              |
| McDonald's             | First National Bank of Dryden |
| HEP Sales              | Cannon Pools                  |
| Maurices               | The Shoe Dept.                |
| Game Stop              | Sally Beauty Supply           |
| GNC                    | Rue 21                        |
| Olympia Sports         | Cortland Nails                |
| Cort-Lanes             | Empire Vision Works           |



## Traffic

Per NY DOT, traffic count on Route 13 just east of the intersection of Route 281 and Route 13 is 16,013 AADT, and the traffic on route 281 just north of Routes 281 and 13 intersection is 17,098 AADT.



185 CLINTON AVE, CORTLAND, NY 13045

607-218-6221 | YAMANCI.COM



Contact: Steve Cinquanti  
Associate Broker GRI  
Cell: 607-423-7800  
Office: 607-218-6221  
Email: [steve@yaman.com](mailto:steve@yaman.com)