

Affordable Office Building For Sale



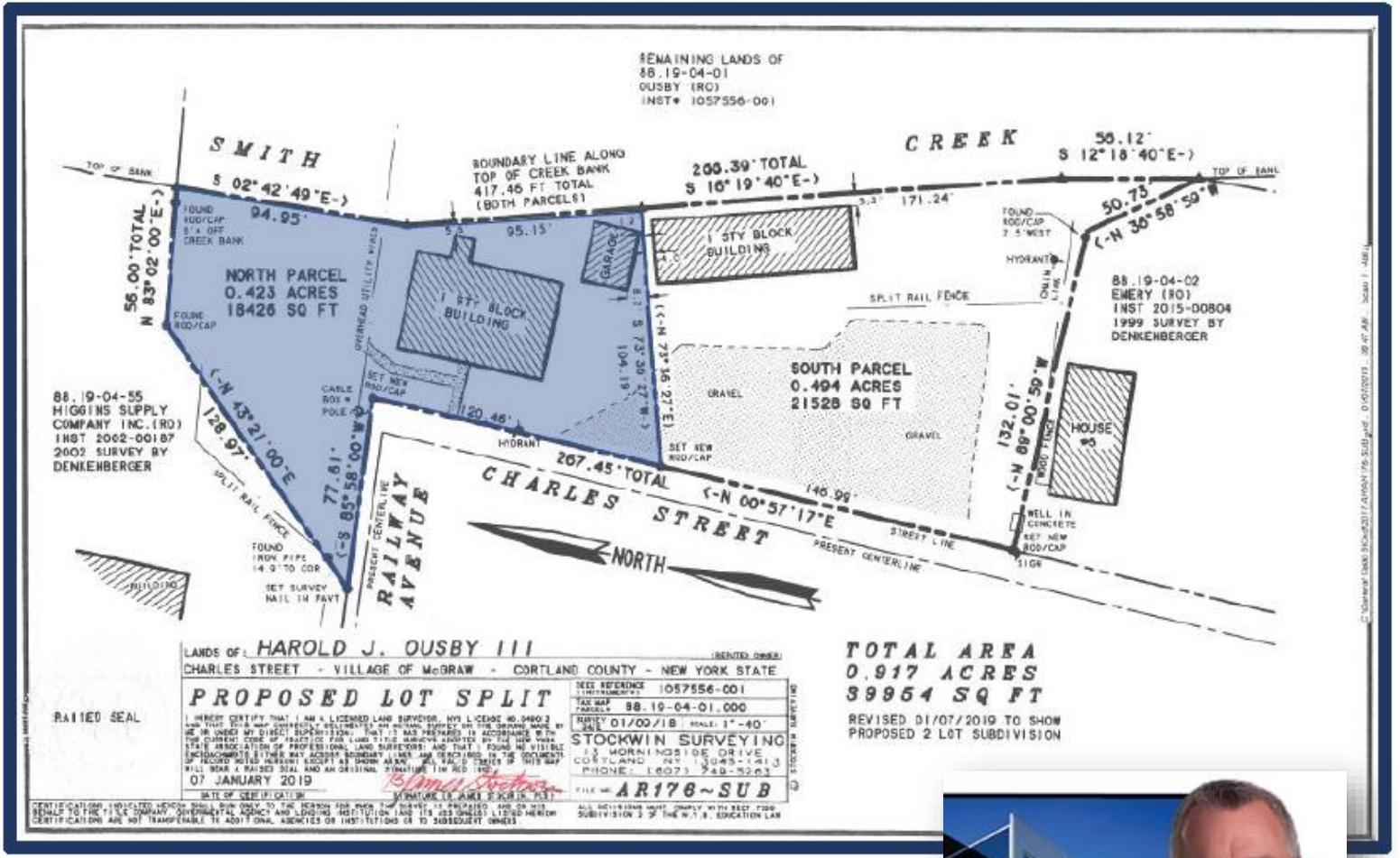
1 Spring Street ~ McGraw, NY

Municipality:	McGraw Village
Tax Parcels:	88.19-04-01.000
Acreage:	.423
Road Frontage:	198.07
Topography:	Flat, drains well
Detached Garage:	1 Story, 432 SF, Built 1948

***Owner Financing**
20% down
5.5%

**Save \$500/mo¹ by
owning this
property over
leasing similar space**

¹ 20% down, 5.5%, 15 yr, pmt \$359.52



YAMAN

COMMERCIAL • INDUSTRIAL

185 CLINTON AVE, CORTLAND, NY 13045
607-218-6221 | YAMANCI.COM

Contact: Steve Cinquanti CCIM
Associate Broker
Cell: 607-423-7800
Office: 607-218-6221
Email: steve@yaman.com